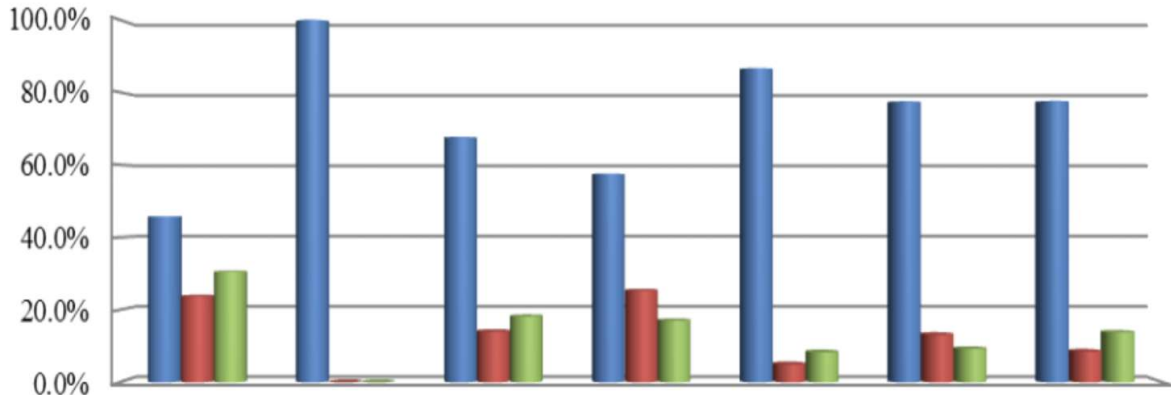


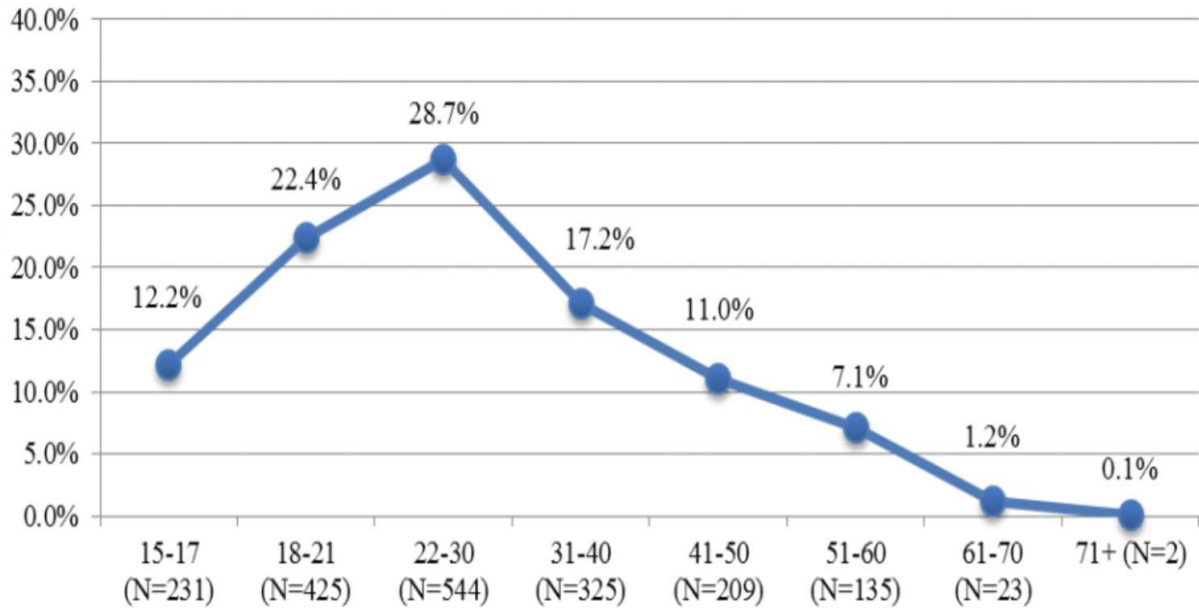
For a more detailed discussion and analysis of sentencing trends in the District of Columbia, please see the Commission’s 2014 Annual Report, available at <https://sdc.dc.gov/node/1108716>

Sentence Type Imposed by Offense Category for Felony Counts Sentenced in 2014

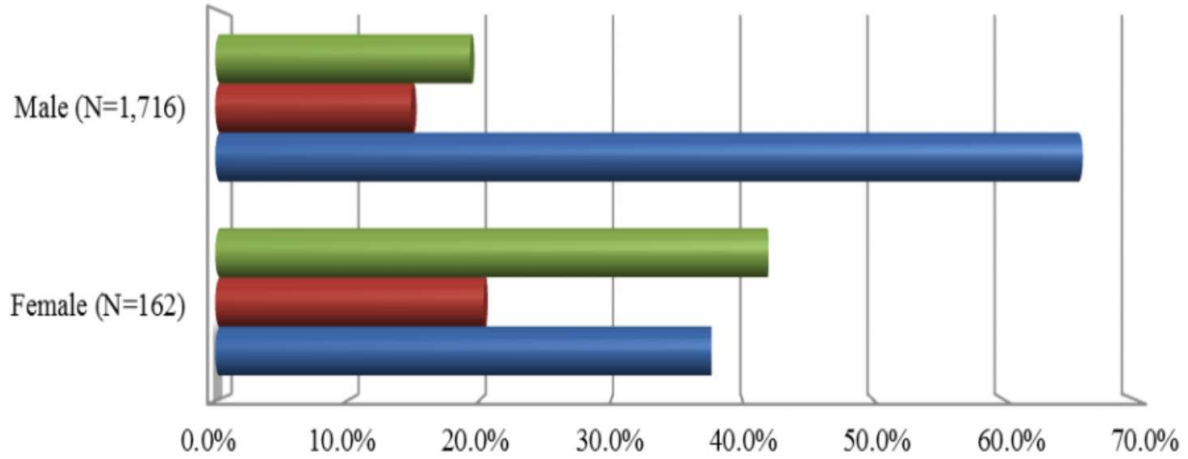


	Drug (N=472)	Homicide (N=97)	Other (N=384)	Property (N=398)	Sex (N=60)	Violent (N=788)	Weapon (N=644)
■ Prison (N=1965)	45.8%	100.0%	67.7%	57.5%	86.7%	77.5%	77.6%
■ Short Split (N=429)	23.7%	0.0%	14.1%	25.4%	5.0%	13.2%	8.5%
■ Probation (N=472)	30.5%	0.0%	18.2%	17.1%	8.3%	9.3%	13.8%

Age Group of Felony Offenders Sentenced in 2014

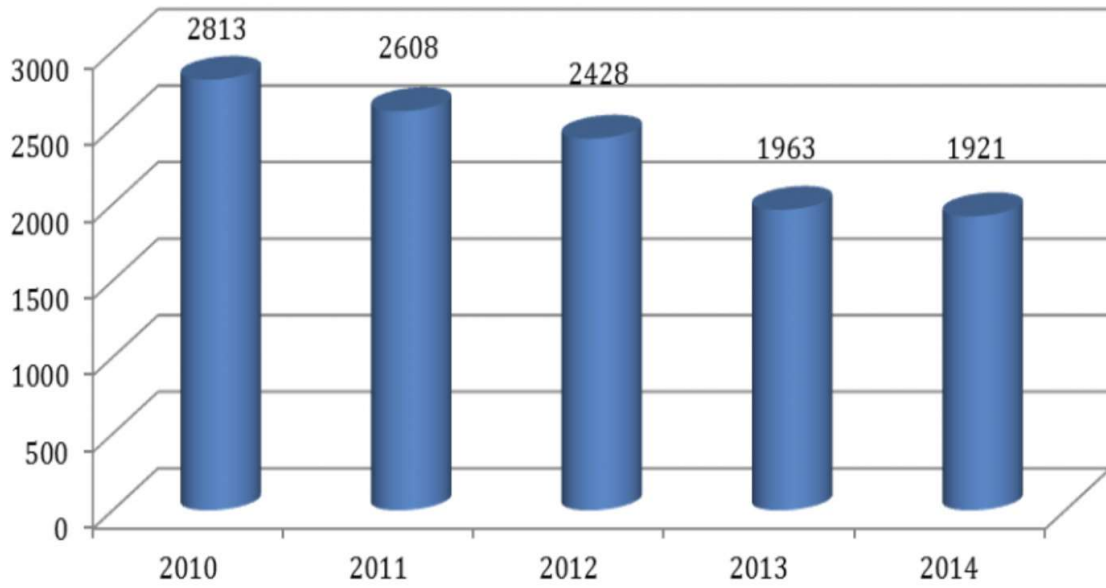


Sentence Type by Gender for Felony Cases Sentenced in 2014

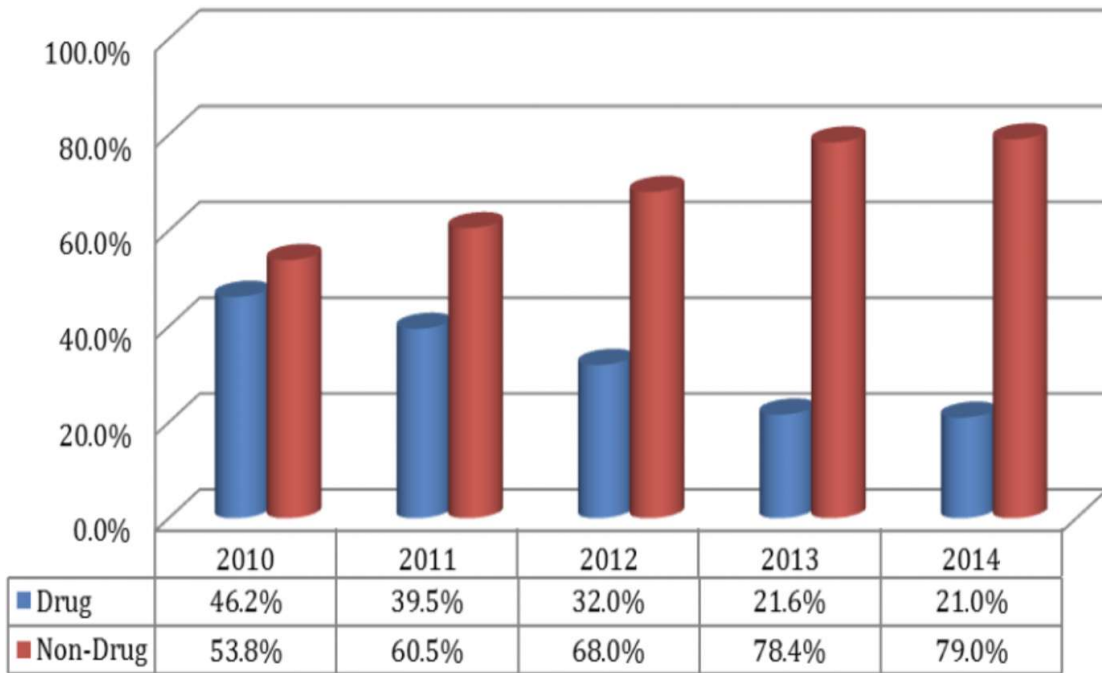


	Female (N=162)	Male (N=1,716)
■ Probation	42.0%	19.3%
■ Short Split	20.4%	14.9%
■ Prison	37.7%	65.8%

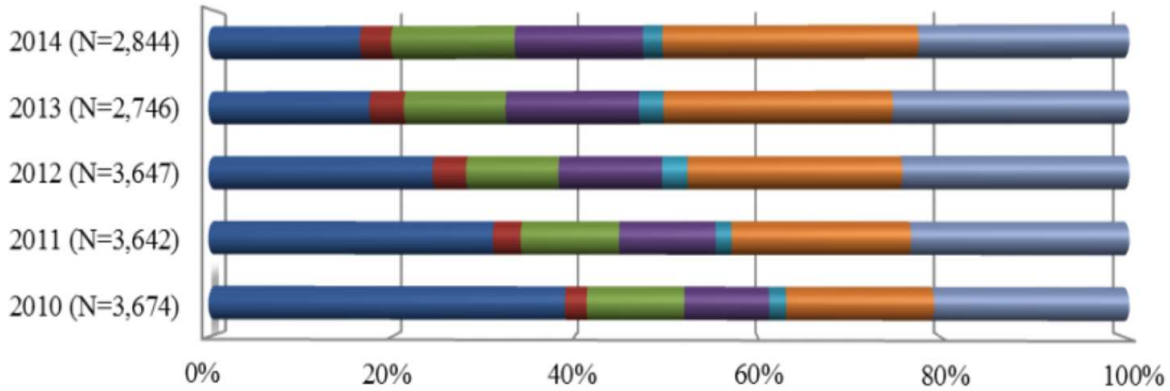
Number of Felony Cases Sentenced in 2010 - 2014



Felony Drug vs. Non-Drug Cases Sentenced in 2010 - 2014

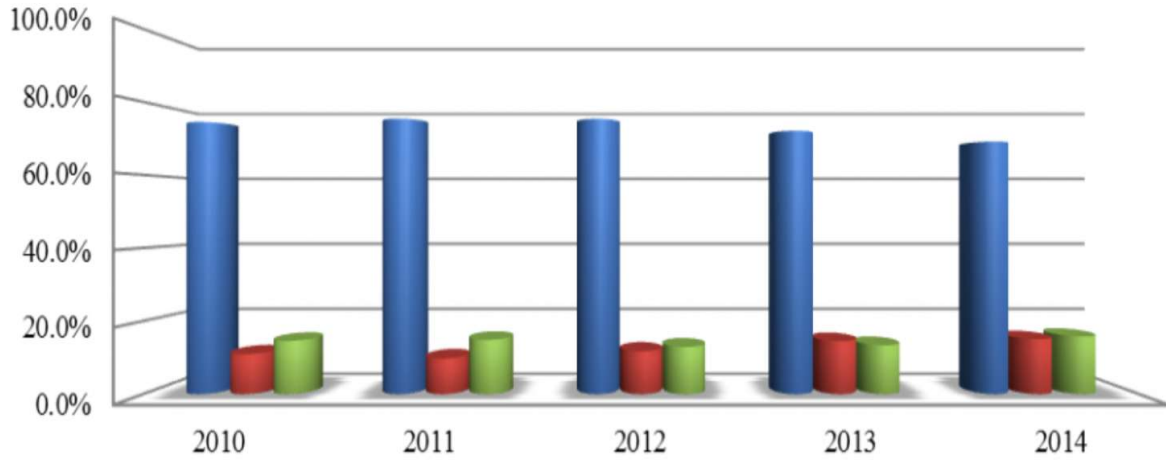


Offense Types for Felony Counts Sentenced in 2010-2014



	2010 (N=3,674)	2011 (N=3,642)	2012 (N=3,647)	2013 (N=2,746)	2014 (N=2,844)
■ Drug	39.0%	31.2%	24.6%	17.7%	16.6%
■ Homicide	2.4%	3.0%	3.7%	3.8%	3.4%
■ Other	10.6%	10.7%	10.1%	11.1%	13.5%
■ Property	9.2%	10.5%	11.3%	14.5%	14.0%
■ Sex	1.9%	1.7%	2.8%	2.7%	2.1%
■ Violent	15.9%	19.4%	23.2%	24.8%	27.7%
■ Weapon	21.0%	23.5%	24.4%	25.4%	22.6%

Sentence Type for Felony Counts Sentenced in 2010 - 2014



	2010	2011	2012	2013	2014
■ Prison	74.5%	75.4%	75.3%	72.1%	69.1%
■ Probation	10.9%	9.7%	11.7%	14.5%	15.1%
■ Short Split	14.6%	14.9%	12.9%	13.4%	15.8%